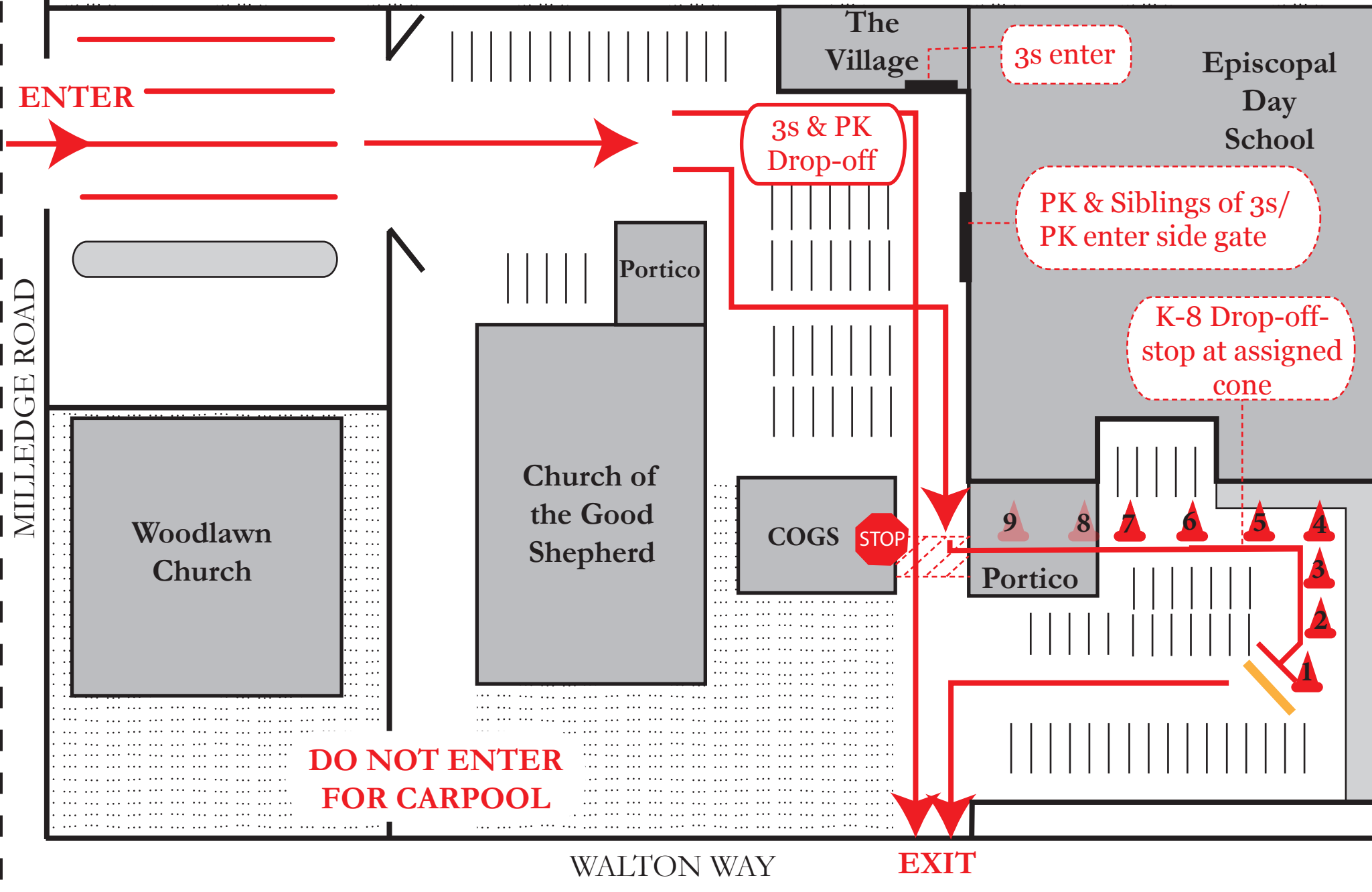


Morning Carpool - 7:45 - 8:10 a.m.



MILLEDGE ROAD

ENTER

Woodlawn Church

Church of the Good Shepherd

COGS

The Village

3s enter

3s & PK Drop-off

PK & Siblings of 3s/
PK enter side gate

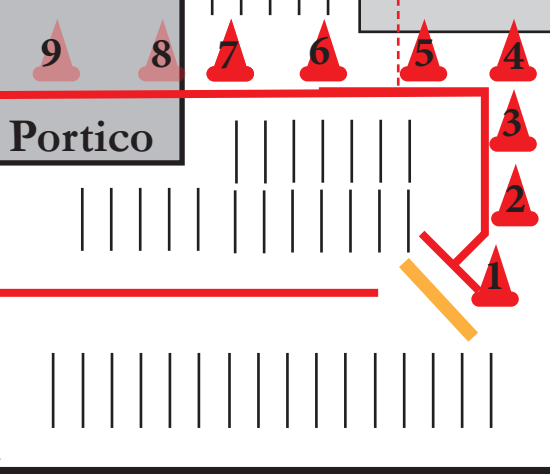
K-8 Drop-off-stop
at assigned cone

DO NOT ENTER
FOR CARPOOL

WALTON WAY

EXIT

Episcopal Day School



Morning Carpool:

All school traffic will enter from Milledge Road and follow the marked traffic patterns.

Parents are asked not to get out of their cars during morning carpool and to refrain from using their cell phones.

Three-year-old & Prekindergarten and Siblings Drop-off:

- Travel straight past the church and drop off threes and their siblings at the Village.
- Threes will be escorted into the village.
- Prekindergarten and siblings of 3s/PK will be escorted into the side gate.
- Drive straight through to EDS exit (mind the stop sign at crosswalk next to portico).

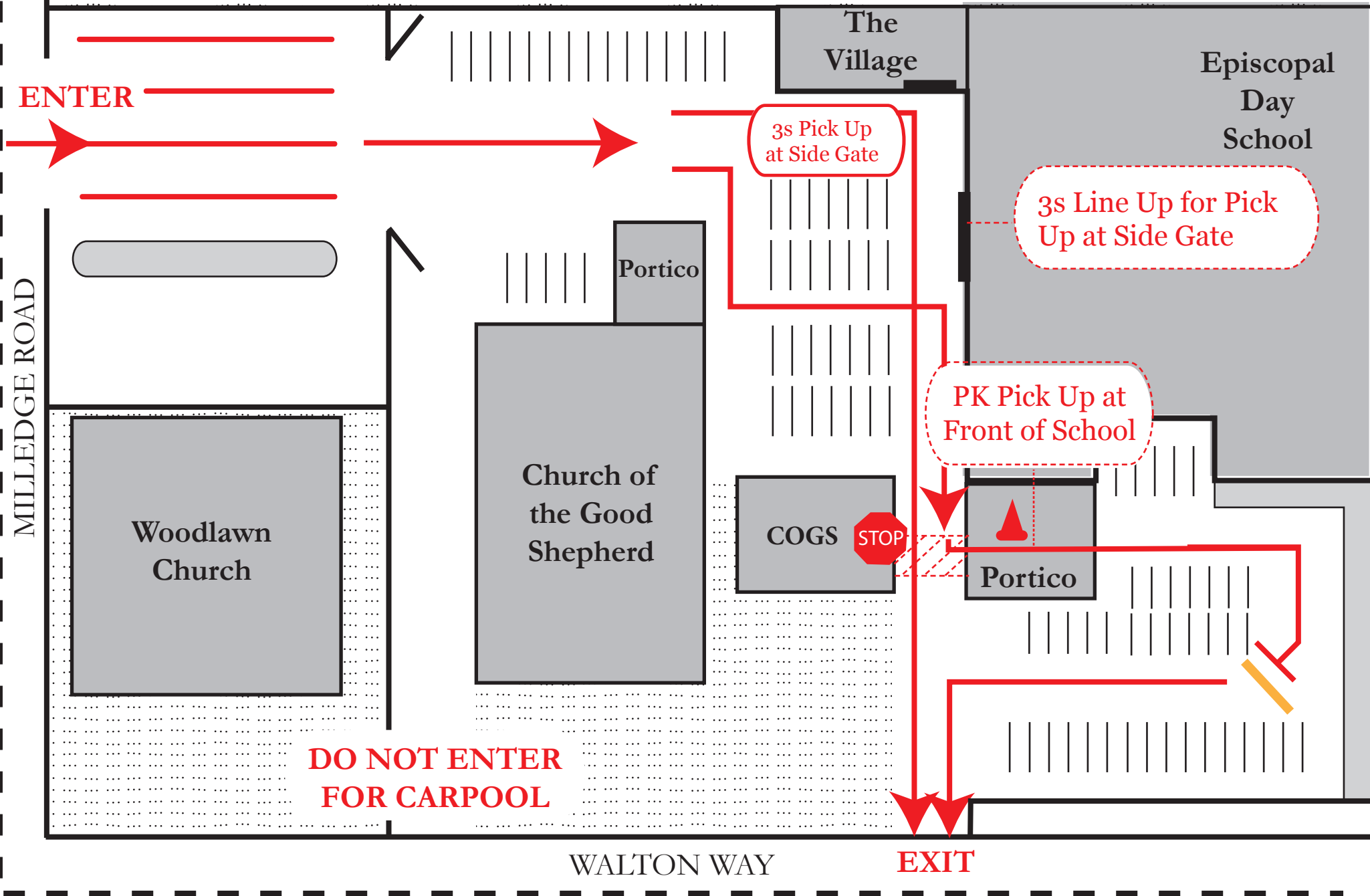
K-8th Grade Drop-off:

- Remain in single line.
- Pull your front bumper up to your assigned cone number.
- Unload children from the driver's side/left side of the car into the safety area. Those exiting from the passenger side of the vehicle should walk in **front** of car to the safety area.
- If passengers need to retrieve anything from the trunk or back of the vehicle, it is the parents' responsibility to ensure their passengers and those from the vehicles ahead, have entered the safety area prior to moving forward.

Faculty will be available to assist with unloading vehicles and walking students to class.

If you need to park, please first stop at your assigned cone and then park in the front lot.

Afternoon Carpool - Preschool 12:30 p.m.



Afternoon Carpool - 3:00 p.m.

